

MADORA LAWSON

INTERIOR DESIGN

RESIDENTIAL DESIGN

- . Interior design consultation for residences in Seattle, Medina, Everett, Machias, and Decatur Island, Washington, Palm Springs, California, and Wailea, Maui, Hawaii.

SNOHOMISH COUNTY PARKS AND RECREATION HEADQUARTERS Snohomish, Washington

- . 9,000sf new office headquarters
- . Interior design for the new headquarters building that includes private and open office space, conference room, and community activities center
- . Consultant to AIA award-winning Miller | Hull Architects

RENTON SCHOOL DISTRICT ADMINISTRATION HEADQUARTERS Renton, Washington

- . Interior design for the remodeled, 57,000 sf Kohlwes Education Center.
- . Consultant to Greene-Gasaway Architects, renovation architects.)



SNOHOMISH COUNTY P.U.D. #1 HEADQUARTERS OFFICE Everett, Washington

- . 23,000sf executive office renovation
- . Interior design for the new headquarters building that included new and renovated office space, training center, cafe and theater
- . Art inventory, selection and placement
- . Awarded the 1994 Illumination Design Award by the Puget Sound Section of the Illumination Engineering Society of North America for outstanding achievement in lighting design (.7 watts/sf achieved in office spaces as opposed to code maximum of 1.2 watts/sf)
- . Interior design consultation for various projects throughout the P.U.D.'s multi-branched facility:
 - . Commons Cafe renovation
 - . Interior and exterior signage program
 - . Employee lounge



MADORA LAWSON INTERIOR DESIGN

**HARBOR
MOUNTAIN
DEVELOPMENT**
Everett, Washington

- . Interior design consultation for mixed use development at Everett's south marina including a 9,000sf retail/commercial/office building and 4,000sf restaurant as well as full interior design services and procurement for a 33 room hotel, "The Inn at Port Gardner"

**THE INN AT PORT
GARDNER**
Everett, Washington

- . Interior design and procurement services for a 33 room inn at Everett's south marina for Harbor Mountain Development. (C. J. Ebert)



INN AT PORT GARDNER
Everett, Washington

MEYER'S CAFE
Everett, Washington

- . Interior design for a new 30 seat cafe at Everett's south marina.

THE "PUD-DELI"
Everett, Washington

- . Interior design for the cafe in Snohomish County PUD's headquarters building. This 1997 remodel added a deli/latte counter in lieu of vending machines.



MADORA LAWSON

INTERIOR DESIGN

As Principal in Charge of Interior Design at The Bumgardner Architects:

**THE PACIFIC
INSTITUTE**
Seattle, Washington

- . Teamed with Hewitt Architects as Principal in charge of interior design of 27,000sf office headquarters in historic downtown building for international motivational consultants

**HILLIS, CLARK,
MARTIN &
PETERSON**
Seattle, Washington

- . Teamed with Hewitt Isley Architects as Principal in charge of interior design of 24,000sf law offices in historic downtown building



**NORTHWESTERN
BANK**
Bremerton,
Washington

- . Interior design for a 4,000sf remodel plus 5,000sf addition to the existing main branch in downtown Bremerton

THE RAINIER CLUB
Seattle, Washington

- . Principal in charge of interior design for a complete interior upgrading of this private downtown club, including lobby, dining rooms, and health club.



THE RAINIER CLUB
Seattle, Washington

**WOMEN'S
UNIVERSITY
CLUB**
Seattle, Washington

- . Principal in charge of interior design for existing "living room" of the private club with largest membership roll in the state
- . Principal in charge of main dining room renovation

UNIVERSITY CLUB
Seattle, Washington

- . Principal in charge of interior design, renovation and remodeling of a turn-of-the-century private men's club adjacent to downtown

MADORA LAWSON INTERIOR DESIGN

As Principal in Charge of Interior Design at The Bumgardner Architects:

SEMAHMOO GOLF
AND TENNIS CLUB
CLUBHOUSE
Blaine, Washington

- Principal in charge of interior design for a new 24,000sf clubhouse with pro shop, swimming pool, and indoor/outdoor tennis courts



SEMAHMOO GOLF CLUB
Blaine, Washington

CAPE FOX LODGE
Ketchikan, Alaska

- Teamed with James Cutler Architects and The Bumgardner Architects as Principal in charge of interior design of a 120 room hotel with 85 seat restaurant and conference facilities for Westmark Hotels



CAPE FOX LODGE
Ketchikan, Alaska

SEATTLE GOLF
CLUB CLUBHOUSE
The Highlands
Seattle, Washington

- Principal in charge of interior design, renovation of and additions to the original 1909 Kirtland Cutter Building
- Principal in charge of interior design for expansion of the men's cardroom

MADORA LAWSON INTERIOR DESIGN

As Principal in Charge of Interior Design at The Bumgardner Architects:

BOEING ENTERTAINMENT SUITE

Olympic Four Seasons
Hotel
Seattle, Washington

- . Principal in charge of refurbishment and furnishing of historic penthouse suite to entertain up to thirty persons

THE RIVERPLACE ALEXIS HOTEL

Portland, Oregon

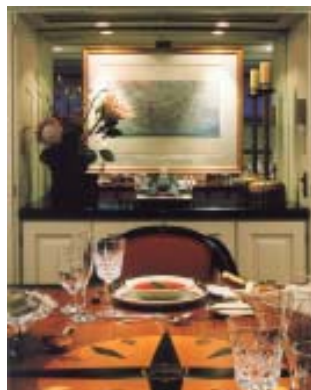
- . Principal in charge for all phases of interior design of a new luxury hotel with 75 guest rooms, a 90-seat restaurant, a 60 seat bar, and a 130 seat conference facility



THE BOEING CORPORATE YACHT "DAEDALUS"

Seattle, Washington

- . Principal in charge for the Boeing Aircraft Company's 125-foot corporate yacht



MADORA LAWSON INTERIOR DESIGN

As Principal in Charge of Interior Design at The Bumgardner Architects:

WATERFRONT
PLACE
Seattle, Washington

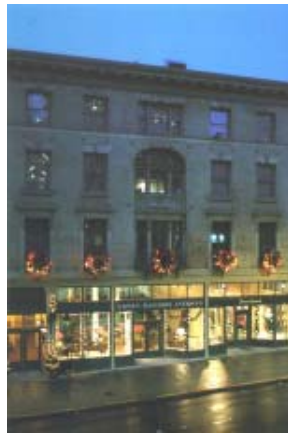


Watermark Tower

- . Project manager for interior design of public spaces and standard tenant finishes for the:
 - Watermark Tower
 - Cornerstone Building
 - Waterfront Place Building
- . Project manager for all phases of interior design and rehabilitation of:
 - Arlington Building
 - Grand Pacific Building
- . Project developer:
 - Paul Schell, Cornerstone Development



Grand Pacific



Arlington Building



Waterfront Place
Residential Lobby

ALEXIS HOTEL AND
RESTAURANT
Seattle, Washington



- . Project manager of all phases of interior design for a new 54 room luxury hotel, 100 seat restaurant, and 40 seat bar
- . Awarded The Institute of Business Designers National Gold Award for Interior Design

